

# WELCOME TO THE ALBURY WODONGA YACHT CLUB



ALBURY WODONGA  
YACHT CLUB

## **SAIL COUNTRY 2015 EVENT INFORMATION BOOKLET**

[www.sailcountry.com](http://www.sailcountry.com)  
[www.facebook.com/sailcountry](https://www.facebook.com/sailcountry)

## Welcome to Sail Country from our Commodore

Welcome to the Albury Wodonga Yacht Club. AWYC is often referred to as the “Little Club in the Country” and we hope you find the same laid back relaxing environment here that our members experience every week on the shores of beautiful Lake Hume.

Founded in 1958 we have a proud history of hosting regattas that don’t just offer quality racing, but a unique freshwater experience on one of the largest inland waterways in Australia. Beautiful lawn areas (I highly recommend a sleep in one of our outdoor bean bags), wood fired pizza oven and BBQ area, children’s playground and plenty of space.

Please make use of our grounds and facilities whilst visiting and if you are unsure of anything at all please just ask any of the regatta volunteers anytime for assistance. We would rather you ask than not utilise something because you just weren’t sure.

Our Club has a strict “No Dog” policy (guide dogs accepted). Please take this into account when planning your visit for the comfort of other guests and your pet.

On behalf of my fellow flag officers and the AWYC members may I wish you good luck if you are competing in this regatta. We hope your experiences will leave you looking forward to your next chance to come back to the Little Club in the Country.

Stuart Richardson  
AWYC Commodore 2015/16

## Albury Wodonga Yacht Club Contact Details

Club House Phone: 0459 533 583  
Street Address: Old Weir Road Lake Hume Bonegilla VIC 3691  
Postal Address: PO Box 640 Albury NSW 2640  
AWYC Website: [www.awyc.yachting.org.au](http://www.awyc.yachting.org.au)  
Event Coordinator: Stuart Richardson - Commodore  
Phone: 0409 386 516  
Email: [commodore@awyc.org.au](mailto:commodore@awyc.org.au)



[facebook.com/AlburyWodongaYC](https://facebook.com/AlburyWodongaYC)



[twitter.com/AlburyWodongaYC](https://twitter.com/AlburyWodongaYC)



[youtube.com/AlburyWodongaSailing](https://youtube.com/AlburyWodongaSailing)



[instagram.com/alburywodongayachtclub](https://instagram.com/alburywodongayachtclub)

## The Yardarm Cafe and Bar

During Sail Country our licensed Cafe will be open daily serving breakfast, lunch and dinner. Snacks and drink are available during the day and into the evening including beer, cider, wine, pre-mixed, espresso coffee, ice creams, chocolates, muffins and plenty more.

For catering dinner for Friday, Saturday & Sunday is to be pre-ordered when you enter the event online.

Cafe / Bar hours will be:

Friday	4pm - Late	Saturday	8am - 9pm
Sunday	7am - 9pm	Monday	8am - 9pm
Tuesday	8am - 5pm		(Bar service from 10am)

**Breakfast** is available each day from the cafe.

Please pre-order the night before.

Egg & Bacon Roll (inc sauce) & Juice	\$8
Cereal & Juice	\$6
Muffins	\$3

**Lunch** menu (to be ordered in morning for collection from cafe).

Rolls (Ham, Chicken or Salad)	\$5
Nachos	\$8
Gourmet Pies (inc sauce)	\$6
Sausage Rolls (inc sauce)	\$4

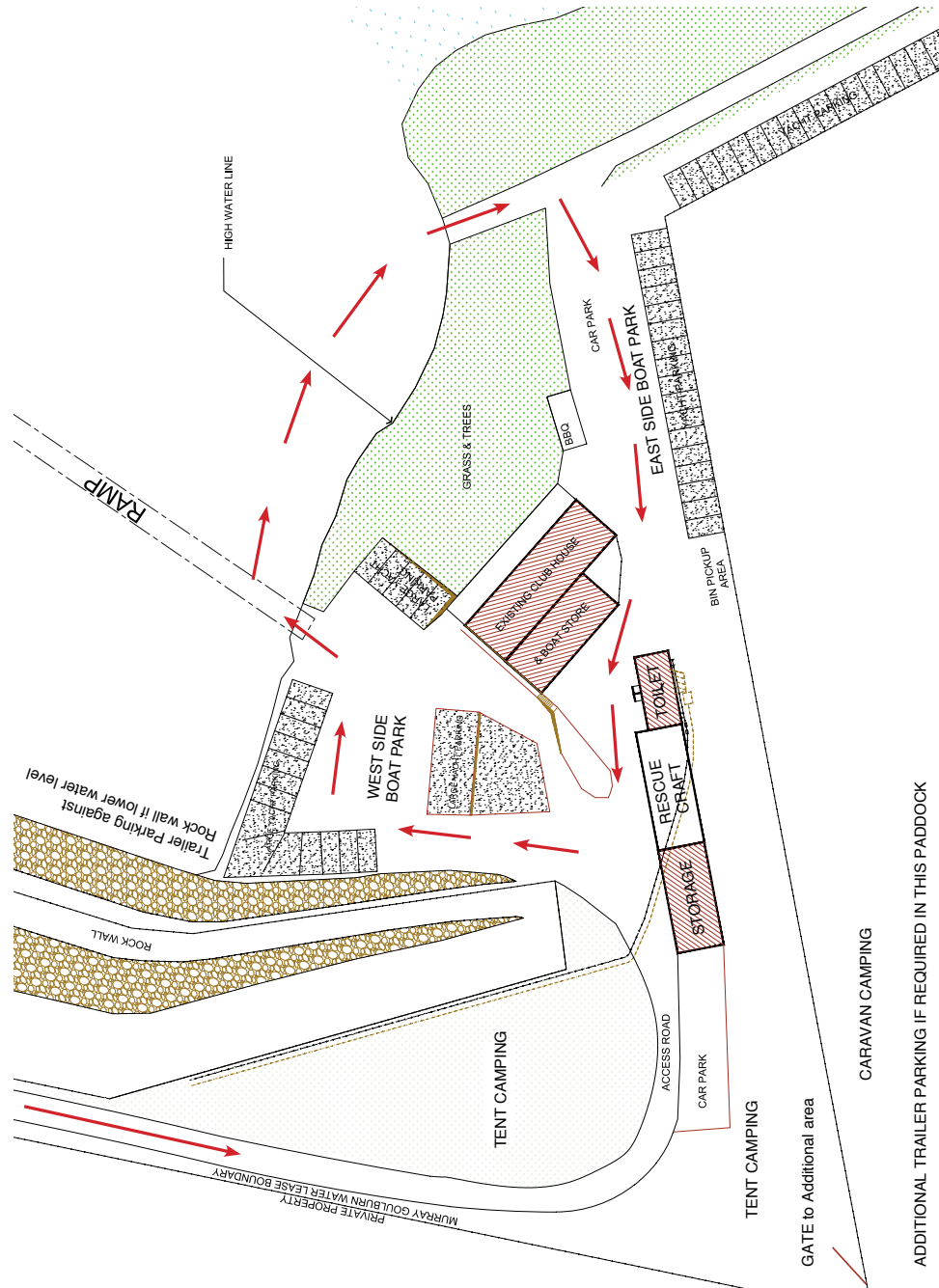
**Dinner**

Friday - Woodfired Pizza	\$10 each	
Saturday - Paella & Side Salad & Ice-cream (Seafood <b>or</b> Chicken & Chorizo <b>or</b> Vegetarian)	\$20 Adults	\$15 Child
- Lasagne & Salad & Ice-cream	(Child only)	\$10 Child
Sunday - BBQ Packs (Beef <b>or</b> Chicken with Salad & Bread Roll)	\$15 Adults	\$10 Child

Monday evening will be Wood Fired Pizzas & if available BBQ Packs & Salad (To be confirmed during the event).

Note: Our Club does not have credit card / eftpos facilities available.

## Mud Map, Traffic Flow



## Car and Trailer Parking, Support Boats

### Car and Trailer Parking

Trailers can be parked along the large rock wall to the left of the main launching ramp when the water is low enough. Additional trailer parking will be made available if required on the foreshore in Cat Bay (near Coastguard tower). Car parking will be to the East of the Clubhouse with an overflow in the paddock adjacent to the Tent Camping Area (preferred area for camper's cars).

### Rigging Areas

The areas available for rigging will depend on water levels at the time of the regatta. The club grounds and foreshore areas are secure and will be under surveillance during the regatta. Boats can be left in the rigging areas overnight during the regatta. Areas may be designated to specific classes depending on number of entries, these areas will be marked and pointed out at registration.

### Launching Ramp

The main Launching Ramp at the club will be used during the regatta for launching and retrieving Club Rescue Craft. Support and spectator boats will be able to use this ramp outside the regatta days, but if numbers reach a level that present a risk to launch support / spectator boats at the club arrangements have been made to launch, retrieve and store these boats at the Angling Club, minutes from the club grounds.

Swing mooring facilities will be available for support and spectator boats during the regatta. We advise that boats should be removed from the water at the end of each day in case of an unpredictable weather change.

We request that you register your support and spectator boats before the event.

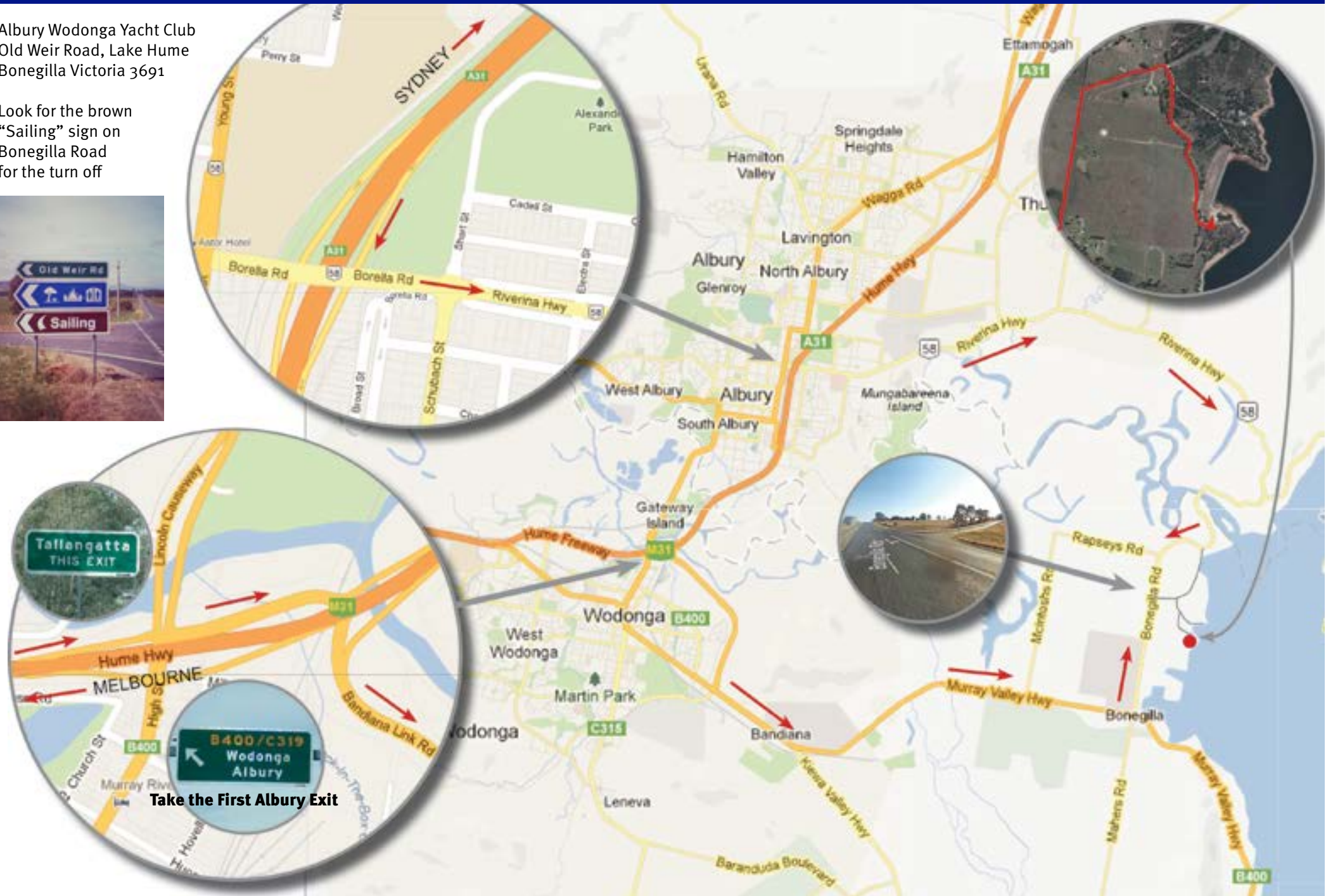
Support / Spectator Boat Registration forms will be available on our website.



## Location

Albury Wodonga Yacht Club  
Old Weir Road, Lake Hume  
Bonegilla Victoria 3691

Look for the brown  
“Sailing” sign on  
Bonegilla Road  
for the turn off



## Accommodation Options

**Camping is available at our Club and must be booked in advance to secure your site.**

For the Sail Country regatta we have arranged access to the neighbour's paddock for extra camping space. Regatta volunteers will be available from Friday afternoon to guide you to a suitable site and help with setup. Sites are not powered but a small camp kitchen will be available with fridges and hot water.

Camping fees Per Person / Per Night:  
Adults - \$10 per night  
Child U/12 - \$5 per night

If you would like to camp at our Club but do not have a van or tent consider hiring:

### Johnno's Camper Trailers

4 / 427 Wagga Road  
Lavington NSW 2641  
**P:** 02 6025 9439 or 0458 525 282  
**E:** albury@campertrailer.com.au  
www.campertrailersalbury.com.au

### Albury Wodonga RV World

5 Melrose Drive  
Wodonga VIC 3690  
**P:** 02 6024 4222  
**E:** wendy@awrvworld.com.au  
www.awrvworld.com.au

Or check out private campers / vans for rent at:  
www.privatecaravanhire.com.au

**Quest Serviced Apartments in Albury/Wodonga are our official accommodation partner for 2015.**

Each property offers the choice of Studio, 1 Bedroom, 2 Bedroom & 3 Bedroom apartments.

To book with any of the 3 properties, call the numbers listed and mention the code word **"Yacht"**

### Quest Albury

550 Kiewa Street, Albury, NSW, 2640  
**P:** 02 6058 0900

### Quest Albury on Townsend

450 Townsend Street, Albury, NSW, 2640  
**P:** 02 6058 1100

### Quest Wodonga

46 Reid Street, Wodonga, VIC, 3690  
**P:** 02 6043 8300



## Services nearby

### Fuel

- 1 Kangaroo Point Store  
Bonegilla Road, Ebden
- 2 CALTEX Wodonga Riverina  
89 Thomas Mitchell Dr, Wodonga
- 3 Shell Service Station  
Cnr David St & Guinea St, Albury

### Convenience Stores

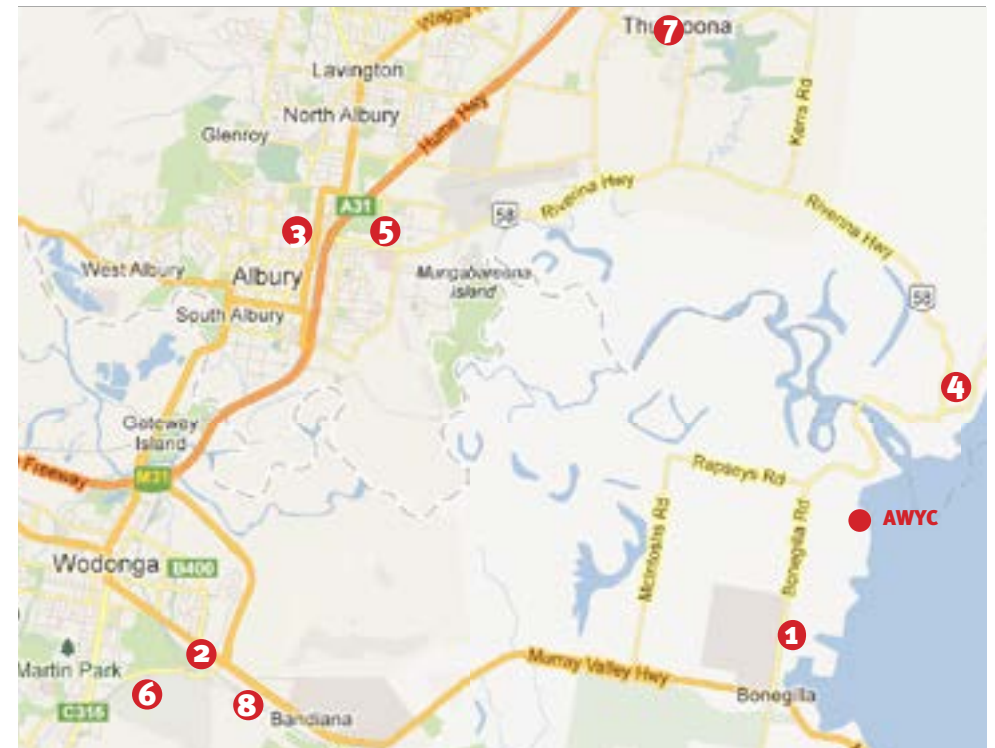
- 1 Kangaroo Point Store  
Bonegilla Road, Ebden
- 4 Lake View Cafe  
37 Murray St, Lake Hume Village

### Groceries

- 5 IGA Albury  
184 Borella Rd, Albury
- 6 Woolworths  
Cnr Victoria Cross Parade & Kelliher Avenue Wodonga
- 7 Woolworths  
10 Shuter Ave, Thurgoona

### ATM's

- 1 Kangaroo Point Store  
Aust Post Outlet ATM
- 7 Thurgoona Shopping Complex
- 8 Blazing Stump Hotel



## Things to do (Other than enjoying our Club)

### Winery Bus Tour - Monday 2nd November

Border Shuttle Bus have arranged a bus tour of the local wineries including Campbell's, Buller's, Cofields, Pfeiffer's and Morris Wines. Picking up from AWYC and if required in town from Quest Albury and Quest Wodonga. Time: 9:30am - 4:30pm approx  
Cost: \$60 per person. Booking and payment direct to Ian:  
Phone: 0402 013 380  
e-mail: [info@bordershuttlebus.com.au](mailto:info@bordershuttlebus.com.au)

### High Country Rail Trail

Walk, run or cycle along the old railway line from Wodonga to Cudgewa, enjoying the views of Lake Hume.  
[www.highcountryrailtrail.org.au](http://www.highcountryrailtrail.org.au)

### Bonegilla Migrant Experience

Seven days a week 10am - 4pm  
[www.bonegilla.org.au](http://www.bonegilla.org.au)

### Bandiana Army Museum

Tues, Thurs & Sat 10am - 2pm  
[www.army.gov.au/Our-history/Army-Museum-Network/Corps-Museums](http://www.army.gov.au/Our-history/Army-Museum-Network/Corps-Museums)

### Murray Art Museum Albury (MAMA)

546 Dean St, Albury  
[www.mamalbury.com.au](http://www.mamalbury.com.au)

### Albury Library Museum

Seven Days  
[www.alburycity.nsw.gov.au/whats-on/museum](http://www.alburycity.nsw.gov.au/whats-on/museum)

### ArtSpace Wodonga

Monday - Saturday  
[www.wodonga.vic.gov.au/leisure-arts-visitors/arts-culture/arts-space.asp](http://www.wodonga.vic.gov.au/leisure-arts-visitors/arts-culture/arts-space.asp)

### Canoe The Murray (Hire & Tours)

Seven Days 8am - 6pm  
[www.canoethemurray.com.au](http://www.canoethemurray.com.au)

### Helifly (helicopter flights)

Albury Airport  
Seven Days a week  
[www.helifly.com.au](http://www.helifly.com.au)

### Zone Laser Tag

204/208 North St, Lavington  
Tuesday - Sunday  
[www.zonelasertagalbury.com.au](http://www.zonelasertagalbury.com.au)

### Rev Heads Slot Cars

1st Floor 486 Dean Street Albury  
Thurs - Sunday  
[www.revheadslotcars.com.au](http://www.revheadslotcars.com.au)

### Regent Cinemas

456 Dean St, Albury  
[www.regentcinemas.com.au](http://www.regentcinemas.com.au)

### Wodonga Ten Pin Bowling

2 Sanyo Dr, Wodonga  
Seven days a week 9am - 9pm  
[www.wodongatenpin.com.au](http://www.wodongatenpin.com.au)

## Useful Information

### EMERGENCY

**Police, Fire, Ambulance 000**  
**Poison Help Line 131 126**

### Albury Police Station

539-543 Olive Street Albury  
02 6023 9299

### Wodonga Police Station

100 Hovell Street Wodonga  
02 6049 2600

### HOSPITALS

#### Albury Hospital (A&E Dept)

Borella Road, Albury  
02 6058 4444

#### Wodonga Hospital

Cnr Wilson & Vermont Sts Wodonga  
02 6051 7111

### AFTER HOURS CLINIC

Albury Hospital, East St, East Albury  
02 6021 0188

### WEEKEND DENTAL CLINIC

Emergency Dental Clinic –  
mobile service for Albury and Wodonga  
0456 249 818  
9am – 6pm weekends



### DOCTORS (BULK BILLED)

Tristar Medical Centre  
1136 Pemberton St, Albury  
02 6021 4000

### Elmwood Medical Centre

291 Beechworth Rd, Wodonga  
02 6056 2011

### Gateway Community Health, GP Superclinic

155 High St, Wodonga  
02 6022 8888

### PHARMACIES

#### Chemist Warehouse

Olive Street, Albury  
Mon-Fri 9am - 9pm  
Saturday 9am - 5pm  
Sunday 10am - 5pm

#### Guardian Pharmacy

178 High Street, Wodonga  
(Next to Coles)  
Mon-Sun 9am - 9pm

### TAXI SERVICES

Albury 02 6025 2255  
Wodonga 02 6024 3444

### VISITOR INFORMATION CENTRES

#### Albury

Cnr Smollett & Young Sts, Albury  
1300 ALBURY (1300 252 879)

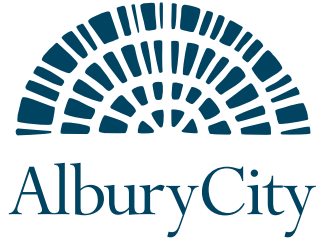
#### Wodonga

69-73 Hovell St, Wodonga  
1300 796 222

Looking for something different? Download the Official Visitors Guide

<http://ovg.visitalburywodonga.com>

## Event Sponsors



## Supporters

